

# POLYGON

Design : Vincent Cantaert & Barbara Widiningtias



## M189 POLYGON STOOL S (TEAK)

W	19"	49 cm	NW	7 lb	3 kg
D	16.5"	42 cm	GW	13 lb	6 kg
H	18"	46 cm	VOL	0.12 m <sup>3</sup>	
			PU	1 / box	



## M190 POLYGON STOOL M (TEAK)

W	23.5"	60 cm	NW	9 lb	4 kg
D	20.5"	52 cm	GW	15 lb	7 kg
H	18"	46 cm	VOL	0.18 m <sup>3</sup>	
			PU	1 / box	



## M191 POLYGON STOOL L (TEAK)

W	29.5"	75 cm	NW	13 lb	6 kg
D	26.5"	68 cm	GW	22 lb	10 kg
H	18"	46 cm	VOL	0.28 m <sup>3</sup>	
			PU	1 / box	

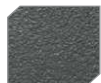
**POWDER COATING COLORS**  
**CATEGORY A - SAND**  
 Matt (Gloss 15%) / Sand textured  
 Application : Aluminum



WHITE  
F03



BLACK  
F05



ANTHRACITE  
F09



LIGHT TAUPE  
F34



TAUPE  
F07

**CATEGORY B - GLOSS**  
 Gloss 55% / Smooth  
 Application : Aluminum



INK BLACK  
F04



URBAN WHITE  
F35



FIRE ENGINE  
RED  
F15



INDUSTRIAL  
YELLOW  
F16



BEIGE  
F38

**CATEGORY C - HIGH GLOSS**  
 Gloss 85% / Smooth  
 Application : Aluminum



WHITE  
HIGH GLOSS  
F02

**SEATREST**  
Teak



LAMINATED TEAK  
RUSTIC  
T35

USA: All MAMAGREEN teak furniture is treated with a "teak shield" protective layer  
 ROW: Teak furniture is untreated